

A satellite-style map of the San Francisco Bay Area coastline, showing the bay, surrounding land, and urban areas. The map is oriented vertically, with the coastline on the left side. The text is overlaid on the dark blue water area.

Regional Shoreline Adaptation Plan

An implementing project of **BAY ADAPT**

**WELCOME!
PLEASE SAY 'HELLO'
IN THE CHAT**

Take Our Survey!



Regional Shoreline Adaptation Plan

An implementing project of **BAY ADAPT**

RSAP PUBLIC EVENT #1

October 26, 2023

An aerial photograph showing a wide river meandering through a vast, flat landscape. The foreground and middle ground are dominated by a large, dark green, marshy area with intricate water channels. To the left, the land is a mix of golden-brown and green fields. In the far distance, a range of low mountains is visible under a pale blue sky with some light clouds. The overall scene is a wide, open natural landscape.

A REGION-WIDE CALL TO ACTION..

WELCOME!





AGENDA

Welcome & Meeting Agreements

Land Acknowledgement

What is the Regional Shoreline Adaptation Plan (RSAP)?

Breakouts #1: Exploring Different Parts of the RSAP

Break

The Vision for the Future of the Bay - Draft Statements

Breakout Session #2: Geography focus

Report Back

Wrap Up & Next Steps



Raise **Zoom Hand** to contribute, please hold questions until end of sections



Can **use the chat** to share links to resources, questions, or comments



Please **rename** yourself:

Name (pronouns),

Organization



Please **stay muted** when not speaking
(Phone mute is *6)



Remind us **your name** before speaking

If you have tech questions or issues,
please message Kat.

TECHNOLOGY

MEETING AGREEMENTS



UNDERSTAND THE DIFFERENCE BETWEEN INTENT AND IMPACT: Try to understand and acknowledge **your** impact. Denying the impact of something you said by focusing on intent is often more destructive than the initial interaction.



MOVE UP / MOVE BACK: Encourage full participation by all present. Take note of who is speaking and who is not. If you tend to speak often, consider “moving back” and vice versa.



PRACTICE MINDFUL LISTENING: Try to avoid planning what you’ll say as you listen to others. Be willing to be surprised, to learn something new. Listen with your whole self. Be mindful that we all have the potential to nourish and be nourished by the exchange.



SPEAK YOUR TRUTH IN WAYS THAT RESPECT OTHERS: Honor your own life experience by speaking your truth but recognize others may have different truths. Center your experience using “I” statements and trust others to do their own sifting and winnowing.



LEARN TO RESPOND TO OTHERS WITH HONEST, OPEN QUESTIONS: With such questions, we help “hear” each other into deeper speech.



YOU CHOOSE HOW YOU PARTICIPATE: You are invited to join this table in whatever capacity you are able, and to participate in whatever way is true for you.



STAY MINDFUL OF THE BENEFITS OF RECIPROCITY: Try to participate with an understanding that we all have the power to nourish and be nourished by one another.

LAND ACKNOWLEDGEMENT

WHO'S WITH US TODAY?

slido



Join at slido.com
#BCDC

① Click Present with Slido or install our [Chrome extension](#) to display joining instructions for participants while presenting.

slido



How would you describe yourself?

① Click **Present with Slido** or install our [Chrome extension](#) to activate this poll while presenting.

slido



**What county do you live in,
or, if you're a planning
practitioner, where do you
primarily work?**

① Click Present with Slido or install our [Chrome extension](#) to activate this poll while presenting.



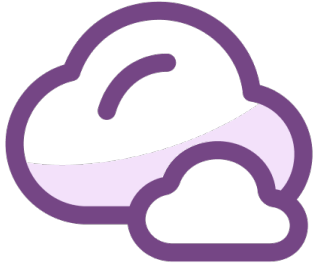
slido

Which of the four geographies on the map do you live or work in?



Click Present with Slido or install our [Chrome extension](#) to activate this poll while presenting.

slido



In a few words, what brought you to this event?

① Click Present with Slido or install our [Chrome extension](#) to activate this poll while presenting.

**AN OVERVIEW OF THE REGIONAL
SHORELINE ADAPTATION PLAN
(RSAP)**



What is the Regional Shoreline Adaptation Plan (RSAP)?



A region-wide plan for the Bay shoreline that guides the creation of coordinated, **locally-planned** sea level rise **adaptation actions** that **work together** to meet **regional goals**.



OCEAN
PROTECTION
COUNCIL



Regional Shoreline
Adaptation Plan
An implementing project of BAY ADAPT



Why do we need a Regional Shoreline Adaptation Plan?

- **Coordinated** adaptation
- Priority resources to **frontline communities**
- Long-term **health of wetlands**
- **Strategic** implementation
- Common **standards and methods**
- Pipeline of **funding**
- Track and **measure progress**



**Regional Shoreline
Adaptation Plan**

An implementing project of **BAY ADAPT**



BAY ADAPT

REGIONAL STRATEGY FOR A RISING BAY

A regional, **consensus-driven strategy** that lays out the actions necessary to adapt the Bay Area to rising sea level to protect people and the natural and built environment.

An initiative of the San Francisco
Bay Conservation and
Development Commission.



Photo of King Tides flooding at the Embarcadero, San Francisco. Photo courtesy of the California King Tides Project.



Guiding Principles

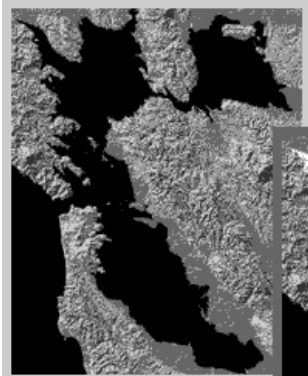
- Support socially vulnerable communities
- Put nature first whenever possible
- Solve interconnected problems at the same time
- Practice inclusive, community-led governance and decision making
- Support existing efforts but plan for the long term
- Pick the right strategy for the right time at the right place



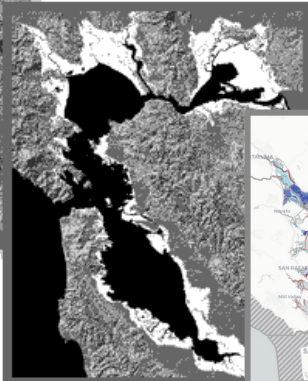
Top photo is an outreach event at Richmond. Bottom photo is Bothin Marsh, photo courtesy of the California King Tides project.



A look at BCDC's past and future



The Bay in 1849

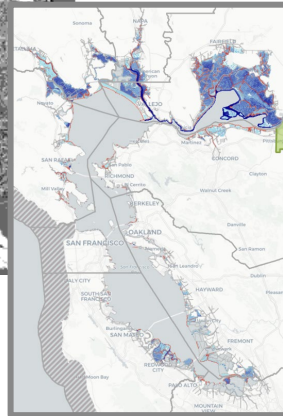


Bay fill in 1965

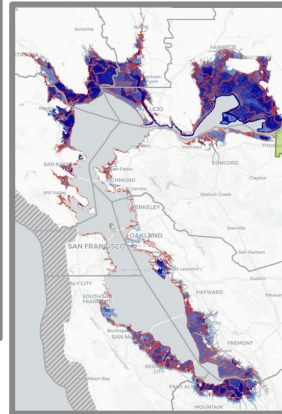


BCDC became the *first* coastal management agency in the nation in 1965

Sea level rise
1 foot by 2050



Sea level rise
6 feet by...



Top photo is king tides flooding at Redwood Shorelines, bottom photo is the Baylands Preserve. Photos courtesy of the California King Tides project.



What's at risk in 40 years?



5 million daily highway vehicle trips

60,000 daily rail commuters



13,000 existing housing units

104,000 existing jobs

70,000 new, planned housing units

85,000 new, planned jobs



28,000 socially vulnerable residents



20,000 acres of depressional wetlands, lagoon and tidal marsh habitat



Top photo is king tides flooding at the San Francisco Embarcadero, courtesy of the King Tides project. Bottom photo is Bair Island wetlands from Google Pro.

Source: Adapting to Rising Tides Bay Area 2020.

New legislation to support sea level rise adaptation (SB 272)

- Statewide legislation passed into law on Oct 7, 2023
- Requires local jurisdictions to develop subregional resiliency plans and for BCDC to develop guidelines for which plans must follow
- Requires BCDC to review - and approve or deny plans - based on consistency with guidelines
- Prioritizes State funding for plan creation and projects in approved plans



- ✓ **Regional Preparation**
- ✓ **Coordination**
- ✓ **Priorities and Funding**

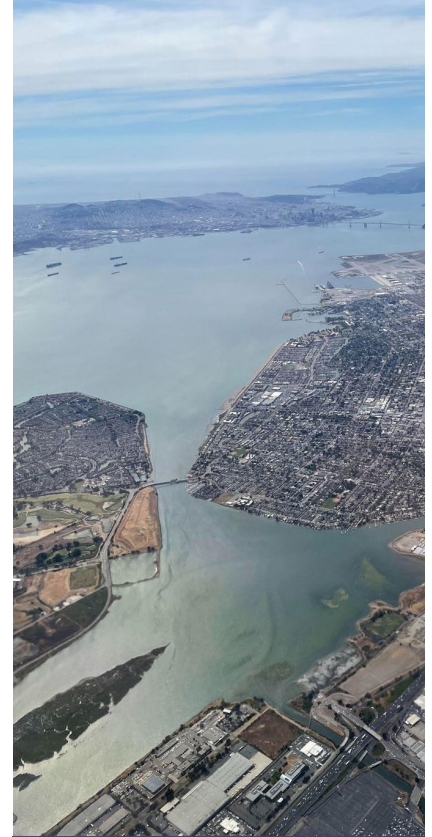
What is the Regional Shoreline Adaptation Plan made up of?



**PART 1:
VISION AND
GUIDELINES**

**PART 2:
LOCAL SUB-
REGIONAL PLANS**

**PART 3: REGIONAL
ADAPTATION
ONLINE MAP**



Aerial view of the Oakland Alameda San Leandro Estuary. Photo by BCDC.

Centering equity and Environmental Justice



Top photo is an outreach event at Richmond. Bottom photo is Bothin Marsh, photo courtesy of the California King Tides project.

Building a Regional Vision for the future

VALUES WE HOLD

CHALLENGE AT HAND

VISION FOR THE FUTURE

Community Health and Well-Being

Bay Ecosystem Health and Resilience

Transportation and Transit

Shoreline Contamination

Housing, Development, and Economics

Public Access and Recreation

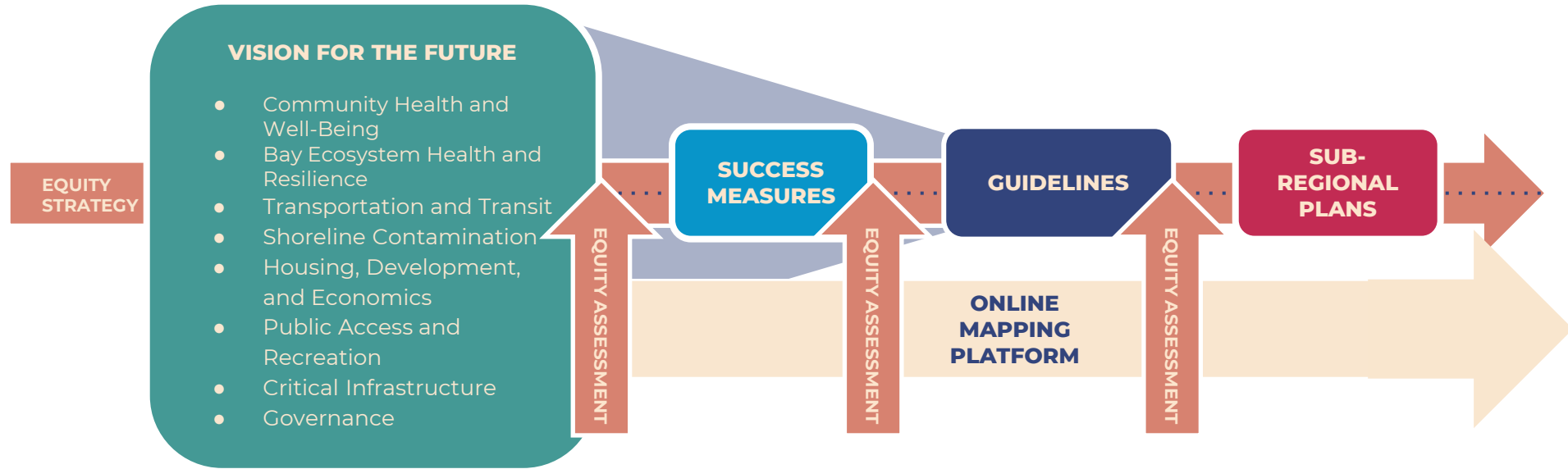
Critical Infrastructure

Governance



Photos from RSAP outreach events in Fall 2023.

Creating Guidelines for Subregional Resiliency Plans



Defining Subregional Shoreline Plans

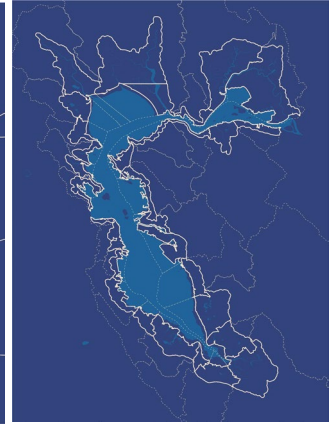
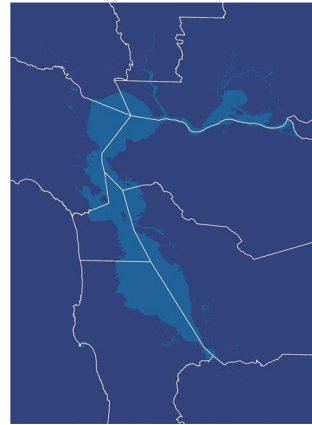
WHAT IS A SUBREGIONAL PLAN?

What is in a subregional plan?

What is the process for developing subregional plans?

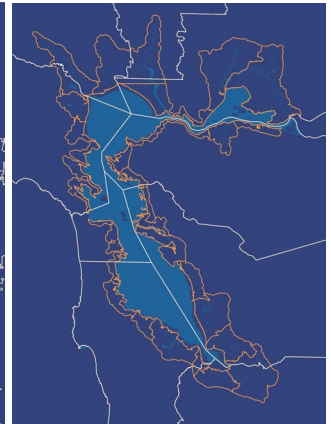
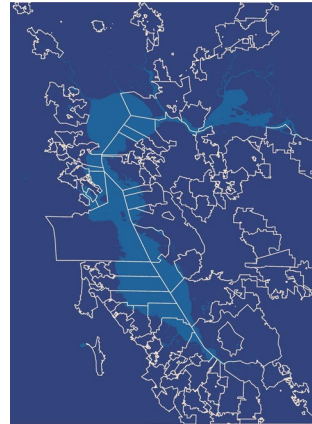
How is it evaluated, adopted, and implemented?

County



Operational
Landscape Unit

Cities





Operational
Landscape Unit +
County

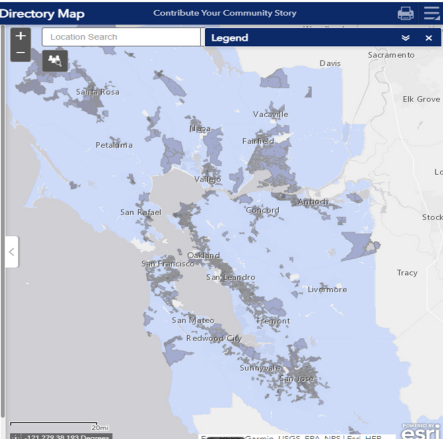
Community Vulnerability + CBO Directory Map Contribute Your Community Story

Lets Get Started!

Before using this tool, please review the [Community Engagement Best Practices Guide](#).

- Use 'Location Search' to find your community or project area.
- Click the map to see social and contamination vulnerability characteristics of a census block group.
- Click  (located under the search bar), select the "Draw Mode", and place a point on the map to find community organizations working in this area.
- Click "Report" and expand the list by clicking the "+" to view CBOs or community characteristics in the search area.
- You can use the "Print" button to create a pdf or  to download as a .csv.
- To find organizations in another area, go back and click "Start Over". Repeat the steps above.

Additional resources include the [BIOC Environmental Justice and Social Equity Bay Plan Policies](#), [Community Vulnerability Mapping Methods](#), and [Data Download](#).



EcoAtlas ABOUT CONTACT DATA PROJECT TRACKER RESOURCES WEB SERVICES PARTNERS

BayDelta **Map** | Projects | Groups | Dashboards

Layers | Legend | Basemap | Overlays Info Item

Habitat Projects

Select a Project
 Limit above list to projects current visible in map window

Filter Habitat Projects by:

- Administrative Region
- San Francisco Bay Adaptation R
- Organization
- Water Board Region
- Site Status
- Project Type

Habitat Projects Info on these data

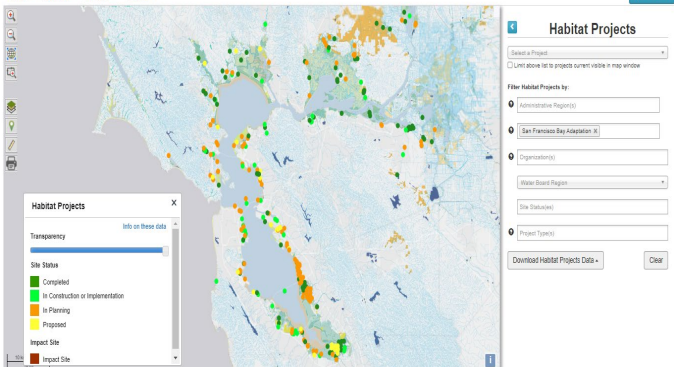
Transparency

Site Status

- Completed
- In Construction or Implementation
- In Planning
- Proposed

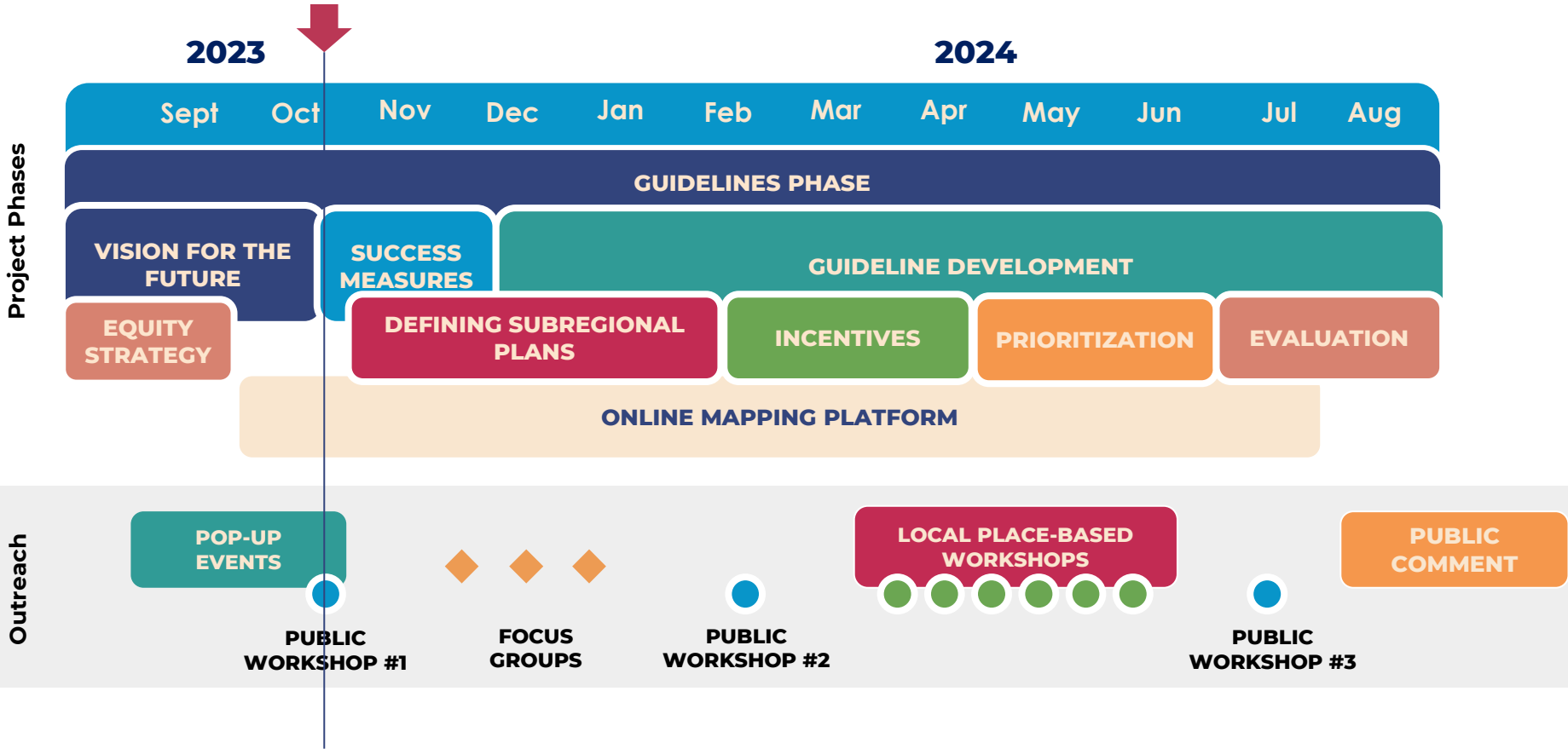
Impact Site

- Impact Site




Developing an online mapping platform to access, share, and track regional progress

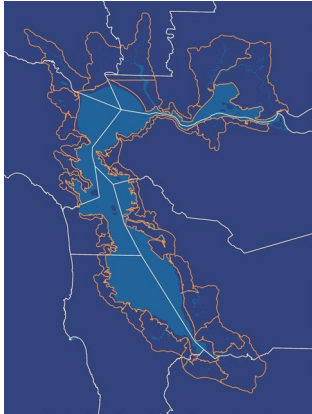
PROJECT TIMELINE



WORLD CAFE BREAKOUT SESSIONS
#1: Exploring Different Aspects of the
RSAP Project

Mini-Sessions

Choose 2... 15 minutes in one session, then switch.



New to the RSAP?
Learn more

1



Building on
regional work

2



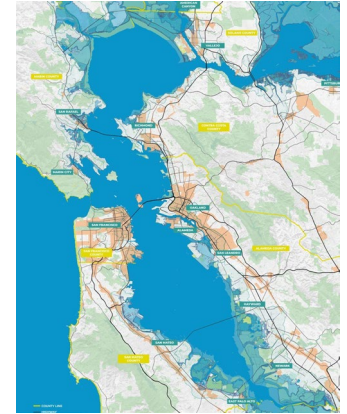
SB 272 and what it
means for RSAP?

3



Embedded equity
in this work

4



How can data and
tools support

5

BREAK

PLEASE RETURN AT 2:31 PM

(& take the survey!)



**Bringing
everyone back to
the room!**

**Put your answer
to this visual pun
in the chat.**



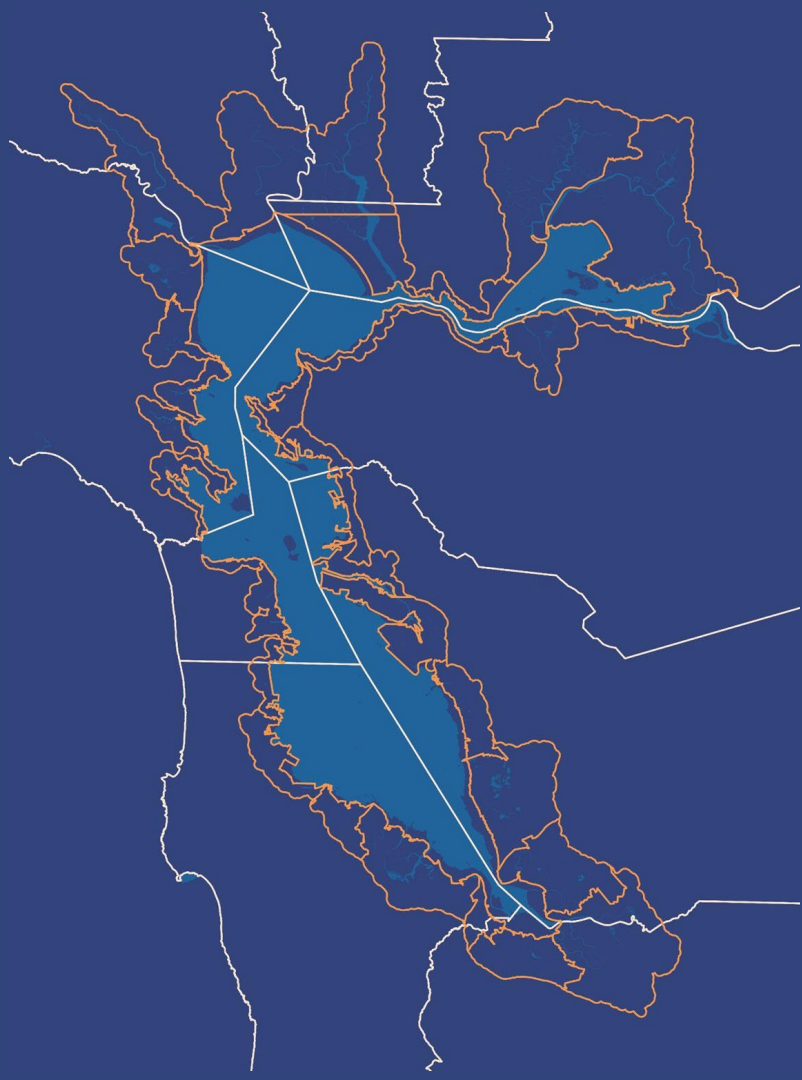
How about this one?

Put your answer to this visual pun in the chat.



Last one!

**Put your answer
to this visual pun
in the chat.**



VISIONS FOR A BETTER BAY THROUGH ADAPTATION PLANNING

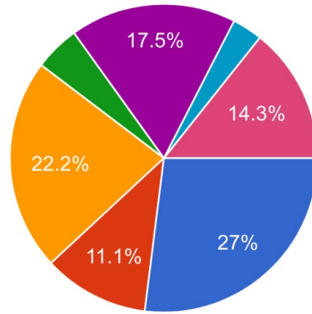


ADVISORY GROUP

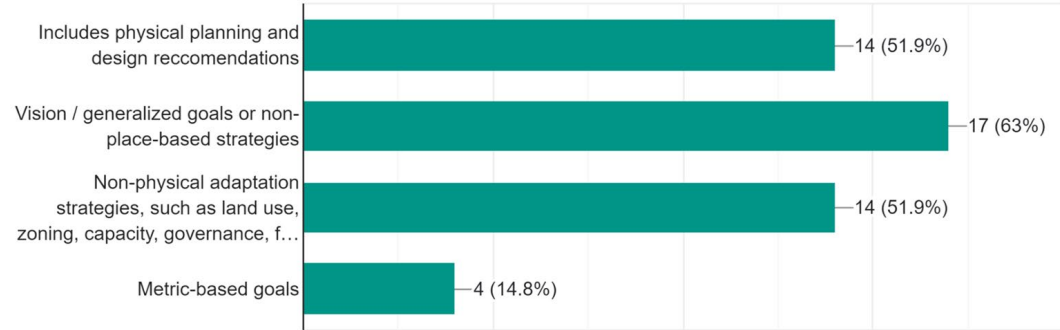
BACKGROUND RESEARCH

DOCUMENT TYPES

- Visioning Document
- Vulnerability Assessment
- Adaptation Planning Document
- Implementation Project (under construction or on permit pathway)
- Data/Analysis Tool
- Planning Process Support Guidance
- Regulatory or Policy Guidance



KEY DOCUMENT CONTENT



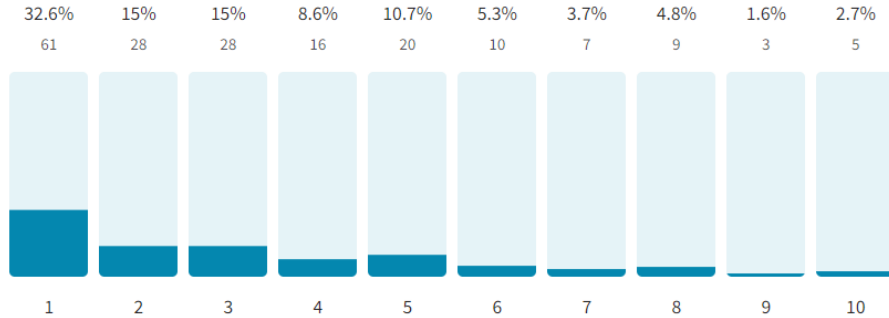
90+

Documents Reviewed and Synthesized
Specific analysis currently informing:

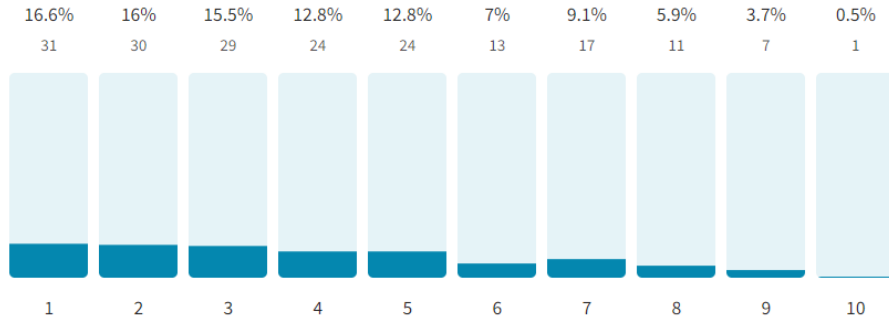
- Topic Area development
- Flood hazard & data conversations
- Today's vision & success measures conversation
- Equity strategy

VISION SURVEY

Protecting natural habitats and wildlife



The physical health and well-being of Bay Area residents

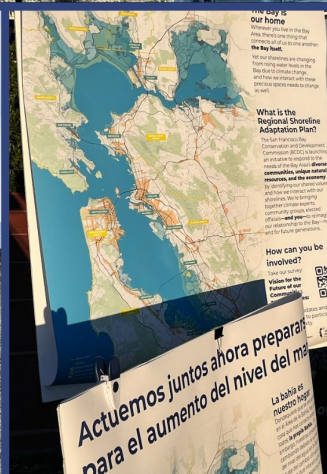
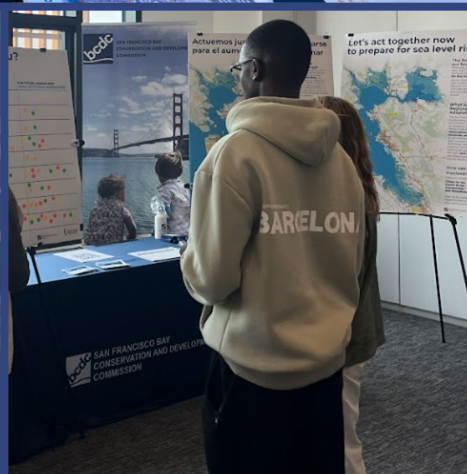


“A reimagined Bay Area. I don't think we can expect everything to remain as it is now. We need to create a future that prioritizes **functioning natural systems** alongside **healthy human communities.**”

-Tamara, Oakland

“The Bay is a precious resource and needs to be protected. Create a **buffer of clean, natural land** to provide adaptation to SLR to **protect natural ecosystems and wildlife.** Move housing and buildings back from the shoreline.”

-Naomi, Menlo Park



POP-UP EVENTS

A Vision for the Future of San Francisco Bay

The San Francisco Bay is the largest Pacific estuary in the Americas, supporting beautiful and diverse habitats. For thousands of years, humans have lived along its banks. Sea level rise puts this one-of-a-kind place, and the life it supports, at risk.

Acting together to address the intersecting challenges of sea level rise, habitat loss, contamination and environmental injustice, we can all support a shared vision: A dynamic Bay shoreline, with thriving communities living in reciprocity with healthy Bay ecosystems for generations to come.



Draft Topic Areas



**ECOSYSTEM HEALTH
& RESILIENCE**



**SHORELINE
CONTAMINATION**



**COMMUNITY HEALTH
& WELLBEING**



**CRITICAL
INFRASTRUCTURE**



**TRANSPORTATION
& TRANSIT**



**HOUSING, DEVELOPMENT
& ECONOMY**



**PUBLIC ACCESS &
RECREATION**



GOVERNANCE

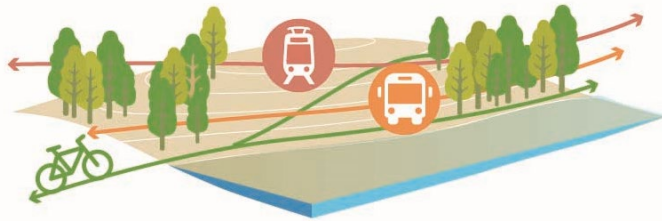
Draft Topic Area Visions



ECOSYSTEM HEALTH & RESILIENCE

Bayland habitats retain or improve their scale, function and biodiversity by prioritizing nature-based solutions, ecosystem migration, and habitat connectivity across all aspects of shoreline planning.

Draft Topic Area Visions



TRANSPORTATION & TRANSIT

Transportation systems, stations and airports are adapted or planned for future upland locations to maintain **continuity of reliable, affordable service** for residents, visitors and the Bay Area economy. Nature-based solutions offer habitat co-benefits wherever possible.

Draft Topic Area Visions



SHORELINE CONTAMINATION

Contaminated shoreline areas that are exposed to flooding and groundwater intrusion—and **the risks they pose to people and habitats—inform community-defined priorities for remediation and habitat restoration.** Additional risks of the remediation process are identified and reduced.

Draft Topic Area Visions



COMMUNITY HEALTH & WELL-BEING

Residents in vulnerable Bay communities benefit from **adaptation planning that acknowledges past harm to advance community health, well-being and self-determination** to protect from further harm.

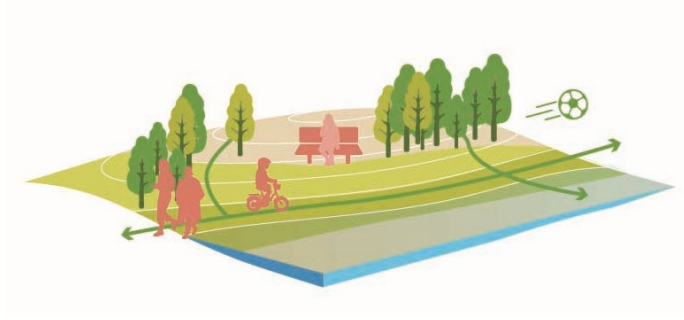
Draft Topic Area Visions



HOUSING, DEVELOPMENT & ECONOMICS

Existing development, new development, and shoreline uses are adapted in place, reconfigured, or located upland to **balance affordable housing, local employment, and Bay ecological health.**

Draft Topic Area Visions



PUBLIC ACCESS & RECREATION

The unique human experiences on the shoreline are supported and enhanced through adaptation, with **no net loss of shoreline recreation space, and access that is open, equitable and inviting** to a diverse community of visitors. Adaptation for recreation and habitat are considered in tandem to balance human enjoyment and ecosystem function.

Draft Topic Area Visions



CRITICAL INFRASTRUCTURE

Improvements to power, water, wastewater and stormwater systems address deficiencies in environmental justice communities and maintain service continuity for everyone, by using **nature-based approaches to adapt existing infrastructure whenever possible, and siting new critical assets outside of coastal inundation zones.**

Draft Topic Area Visions

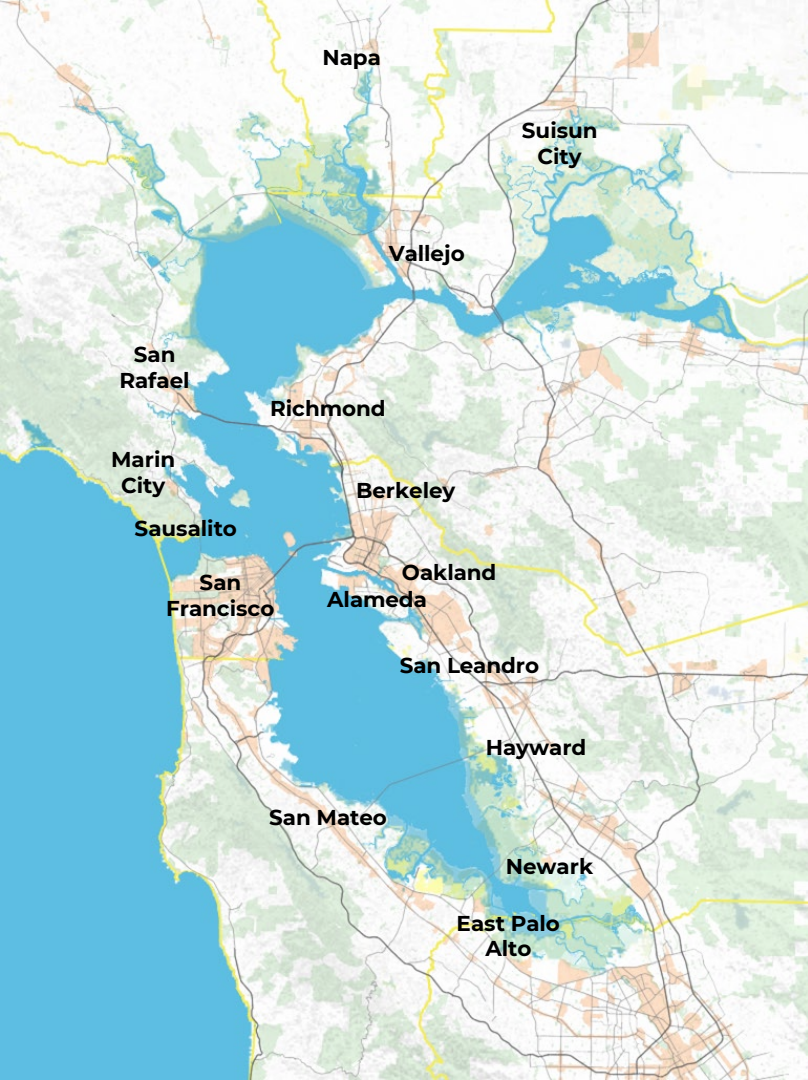


GOVERNANCE

Local governance structures for sea-level rise adaptation are developed with **community participation, particularly those historically left out of decision-making.**

Governance bodies include or collaborate with related agencies, and provide **capacity for fundraising to adaptively manage built projects into the future.**

GEOGRAPHIC BREAKOUT SESSIONS #2:
Discussing How Each Part of the Region
Contributes to the Whole



Conversations with your neighbors and collaborators



Conversations with your neighbors and collaborators

Which of these visions and topic categories are most relevant to you and where you live or work?

What makes your part of the region uniquely suited to carry forward any one of these visions?

Which of these visions and topic categories feels most difficult to achieve in your part of the region? Why?

**What tools or resources do you
need to better address
adaptation across these
categories?**

**WHAT DID YOU HEAR?
INTERACTIVE RECAP**

We'll recap in this order:



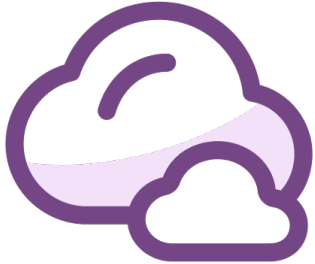
slido



Join at [slido.com#BCDC](https://slido.com/#BCDC)

① Click Present with Slido or install our [Chrome extension](#) to display joining instructions for participants while presenting.

slido



Suisun Bay - What did your group think was most important to emphasize in your geography?

① Click Present with Slido or install our [Chrome extension](#) to activate this poll while presenting.

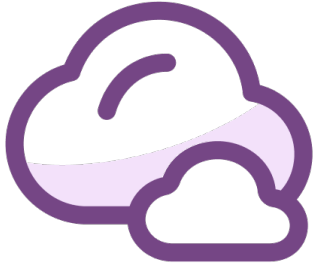
slido



Suisun Bay - What did your group discuss as the biggest challenge or barrier to achieving the visions in your geography?

① Click Present with Slido or install our [Chrome extension](#) to activate this poll while presenting.

slido



San Pablo Bay - What did your group think was most important to emphasize in your geography?

① Click Present with Slido or install our [Chrome extension](#) to activate this poll while presenting.

slido



San Pablo Bay - What did your group discuss as the biggest challenge or barrier to achieving the visions in your geography?

① Click Present with Slido or install our [Chrome extension](#) to activate this poll while presenting.

slido



Central Bay - What did your group think was most important to emphasize in your geography?

① Click Present with Slido or install our [Chrome extension](#) to activate this poll while presenting.

slido



Central Bay - What did your group discuss as the biggest challenge or barrier to achieving the visions in your geography?

① Click Present with Slido or install our [Chrome extension](#) to activate this poll while presenting.

slido



South Bay - What did your group think was most important to emphasize in your geography?

① Click Present with Slido or install our [Chrome extension](#) to activate this poll while presenting.

slido

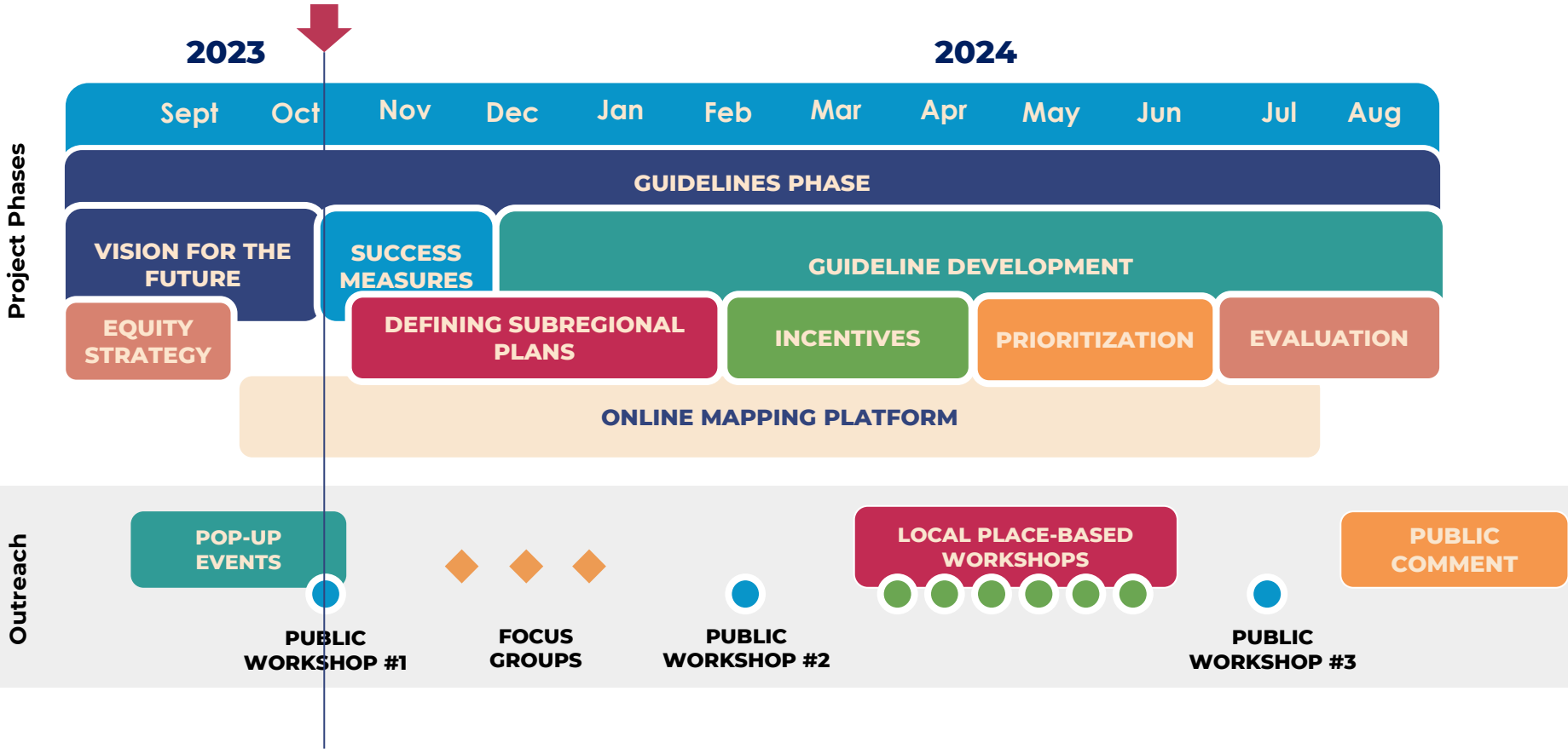


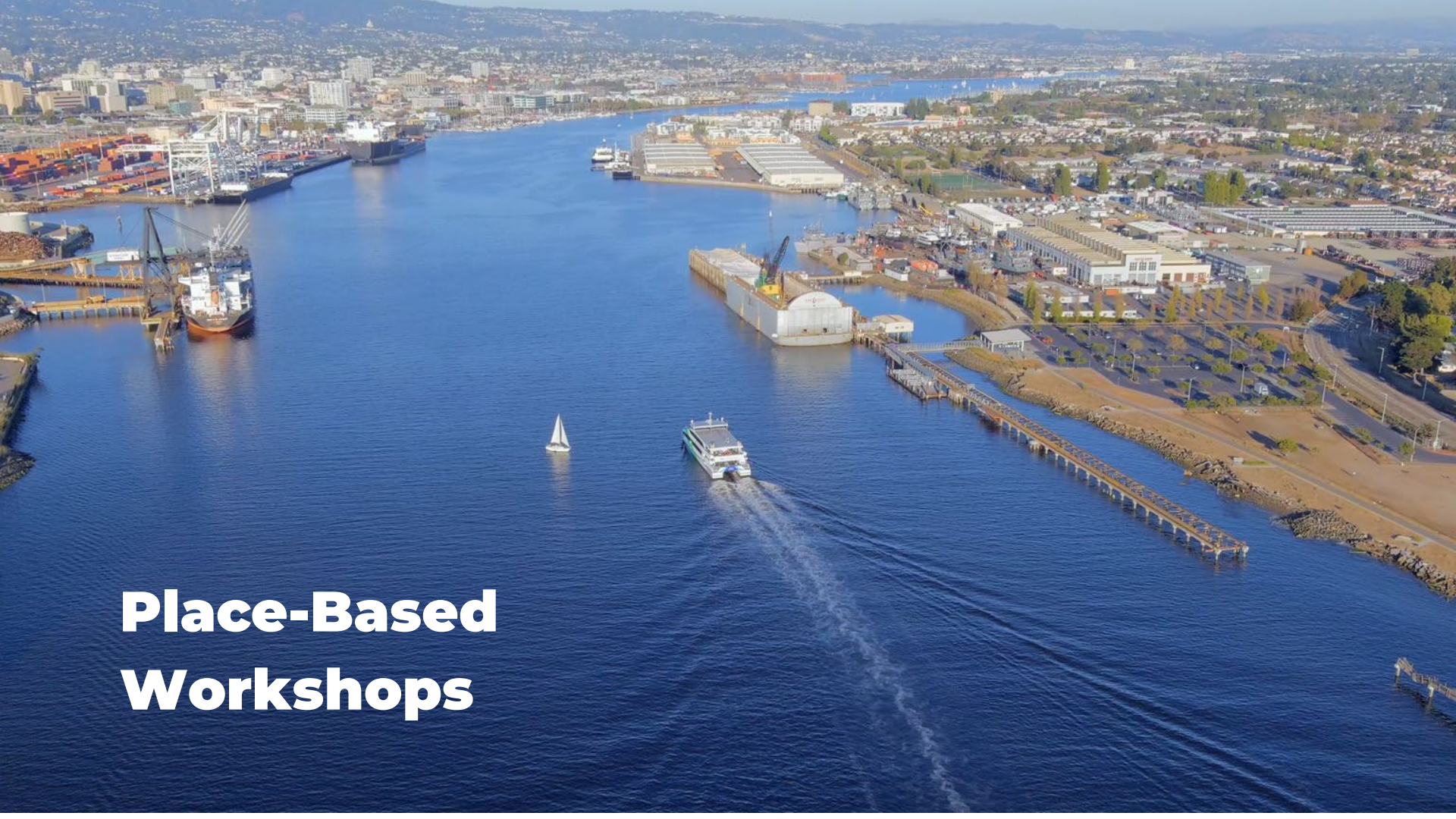
South Bay - What did your group discuss as the biggest challenge or barrier to achieving the visions in your geography?

① Click Present with Slido or install our [Chrome extension](#) to activate this poll while presenting.

WRAP UP & LOOK AHEAD

PROJECT TIMELINE





Place-Based Workshops



<https://lp.constantcontactpages.com/su/lICNWAb>

RSAP Email Updates



Follow development of the Adaptation Visions

THANK YOU!

Jaclyn Mandoske
Senior Climate Adaptation Planner
Jaclyn.mandoske@bcdc.ca.gov



<https://bit.ly/3Esr18T>