



Regional Shoreline Adaptation Plan

An implementing project of **BAY ADAPT**

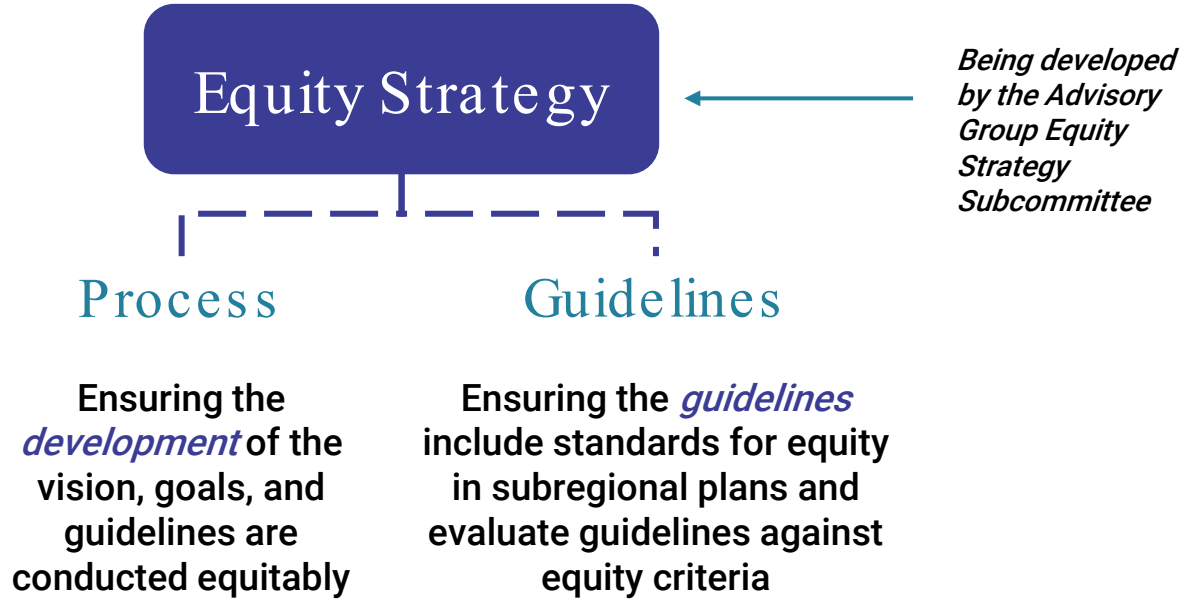
HOW IS EQUITY EMBEDDED IN THE WORK?

Public Event #1, October 26th 2023

REGIONAL SHORELINE ADAPTATION PLAN (RSAP)
Equity Strategy



Developing an Equity Strategy



Our Work Together

Equity Strategy supporting other RSAP deliverables



REGIONAL SHORELINE ADAPTATION PLAN (RSAP)
Advisory Group

Advisory Group

Aaron Burnett, Director of Policy and Civic Engagement

Adam Varat (he/him), Port of San Francisco, Waterfront Resilience Program

Adrian Covert, Bay Area Council

Anthony Khalil, Bayview Hunters Point Community Advocates

Ariana Rickard*, Sonoma Land Trust

Arthur Feinstein (he/him), Sierra Club

Aundi Mevoli (she/her), San Francisco Baykeeper

Brenda Goeden (she/her), BCDC

Brian Holt, East Bay Regional Parks

Carin High, Committee to Complete the Refuge

Danielle Mieler, City of Alameda

Diana Perez-Domencich*^ (she/her), Bay Area Air Quality Management District

Ella McDougall (she/her), Ocean Protection Council

Emily Corwin, Suisun-Fairfield Sewer District

Jasneet Sharma*, County of Santa Clara

Jeanette Weisman, MTC/ABAG

Jemma Williams (she/her/they), San Francisco Bay Joint Venture (SFBJV)

Jeremy Lowe, San Francisco Estuary Institute

Jessica Davenport (she/her), State Coastal Conservancy

John Bourgeois, Santa Clara Valley Water

John Briscoe, Briscoe, Ivester & Bazel

Josh Bradt, Bay Area Regional Collaborative (BARC)

Josh Quigley, Save the Bay

JR DeLaRosa, Cal OES

Julie Beagle, US Army Corps of Engineers

Karen Pierce*^, San Francisco Department of Public Health

Kate Hagemann, City of San Rafael

Keta Price, The Hood Planner

Kristina Hill, UC Berkeley

Laura Feinstein, SPUR

Makena Wong, San Mateo County Flood and Sea Level Rise Resiliency District (OneShoreline)

Matt Maloney, MTC/ABAG

Miyko Harris-Parker, San Francisquito Creek Joint Powers Authority

Paul Campos, Building Industry Association

Roger Leventhal, Marin County Flood Control District

Ryan Hernandez, Contra Costa County Water Agency

Sahrye Cohen, Environmental Protection Agency

Stuart Siegel, SF Bay National Estuarine Research Reserve

Tian Feng, Bay Area Regional Transit (BART)

Todd Sax, Department of Toxic Substances Control California Environmental Protection Agency

Vishal Ream-Rao, Caltrans

Xavier Fernandez, Water Boards



Environmental Justice and Equity **Representatives**

Regional Shoreline Adaptation Plan Advisory Group

- Are from Community-Based Organizations
- Represent underrepresented communities
- Represent geographic diversity across Bay Area
- Co-developing the Equity Strategy
- Pre-meetings before Advisory Group Meetings
- Compensated for participation (\$125/hour)
- Agreement of Expectations and Hours



Photo credit: Oakland Shoreline Leadership
Academy, Keta Price.

Advisory Group Debrief Update

Equity Subcommittee Members Across Subcommittees

Subcommittee Team

BCDC: Phoenix Armenta

Mithun: Tim Mollette-Park :

- Aaron Burnett
- Anthony Khalil
- Aundi Mevoli
- Josh Bradt
- Karen Pierce
- Keta Price
- Kristina Hill
- Luiz Barata
- Miyko Harris-Parker
- Ellen Doudna

Outreach and Communications

- Josh Bradt
- Keta Price
- Luiz Barata
- Miyko Harris-Parker

Data and Mapping

- Kristina Hill
- Ellen Doudna

Environment

- Aundi Mevoli
- Ellen Doudna

Subregional Adaptation

- Anthony Khalil

[Subcommittees Overview Document](#)

REGIONAL SHORELINE ADAPTATION PLAN (RSAP)

**Outreach and
Communications**

Key Outreach Efforts

Pop-up Event Community Visits

Raise awareness and interest in the RSAP, gain input on community values and needs, **add to the network** of people who are following and participating in the RSAP process



Key Outreach Efforts

Pop-up Event Community
Visits

Virtual Public
Workshops

Place Based
Workshops

Shoreline
Leadership
Academy



Key Outreach Efforts

Virtual Public Workshops

Large events at 3 key moments:

#1

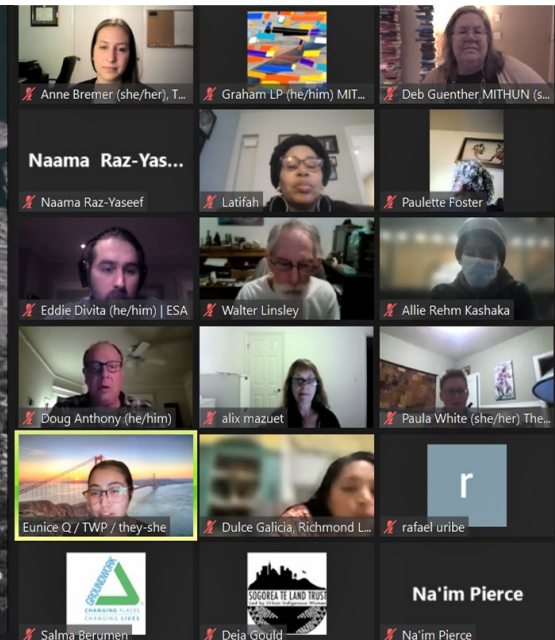
Update On Process So Far
Reaction To Vision & Goals

#2

Intro Subregion Approach
Seek Participation In Local
Workshops

#3

Sharing the Guidelines
Public comment period



PLACE-BASED WORKSHOPS

Focus on **design outcomes from the planning guidelines in a particular community**, & education on the **next steps in implementing actions** to the benefit of communities and the region. Engage 6 local community orgs to develop meeting content and hosting



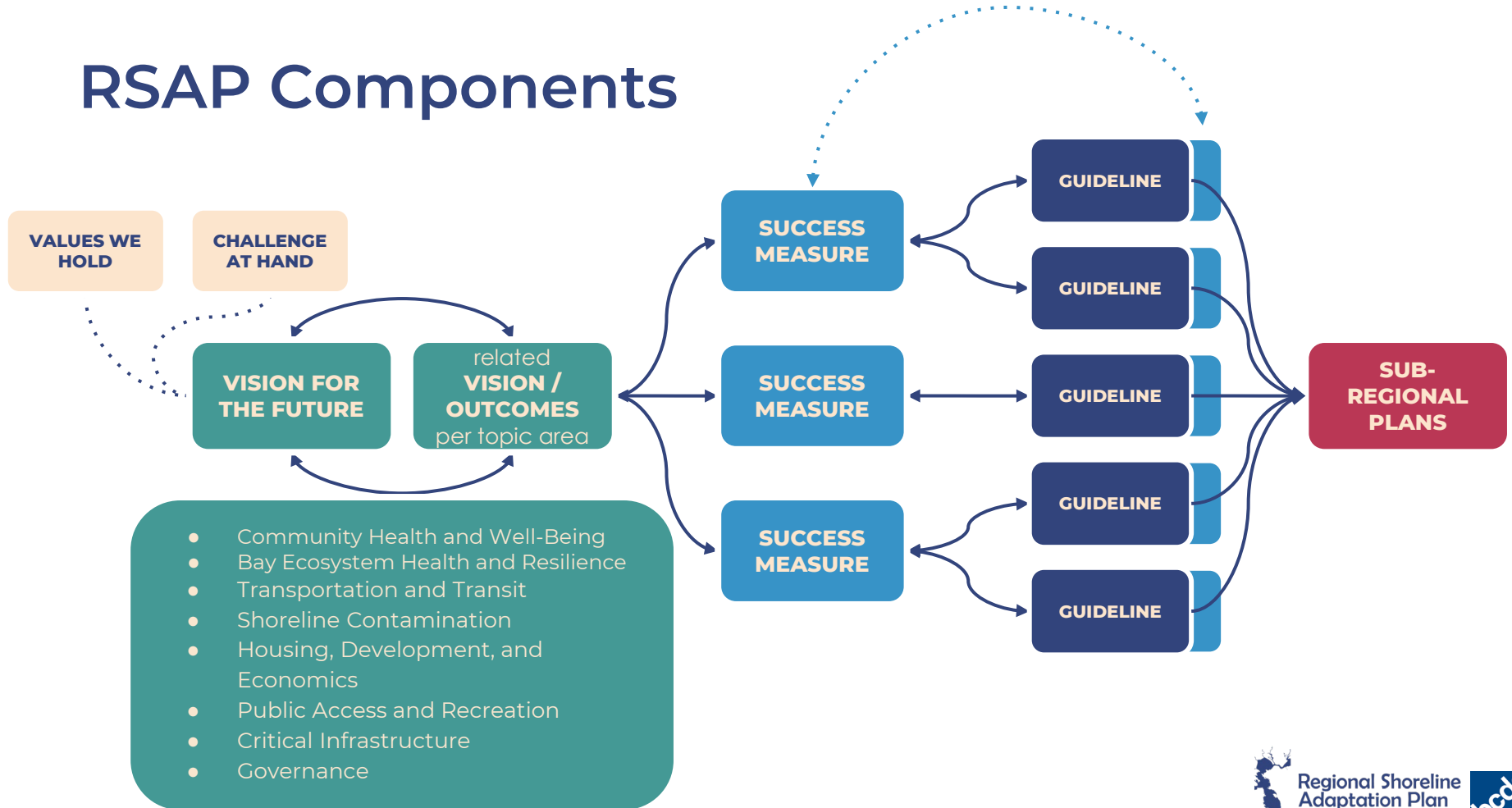
Shoreline Leadership Academy

- Capacity building training program
- Hire 15-20 residents of disadvantaged communities to learn about the shoreline
- Pilot project done in Oakland in 2021
- BCDC making it a region wide program in multiple locations

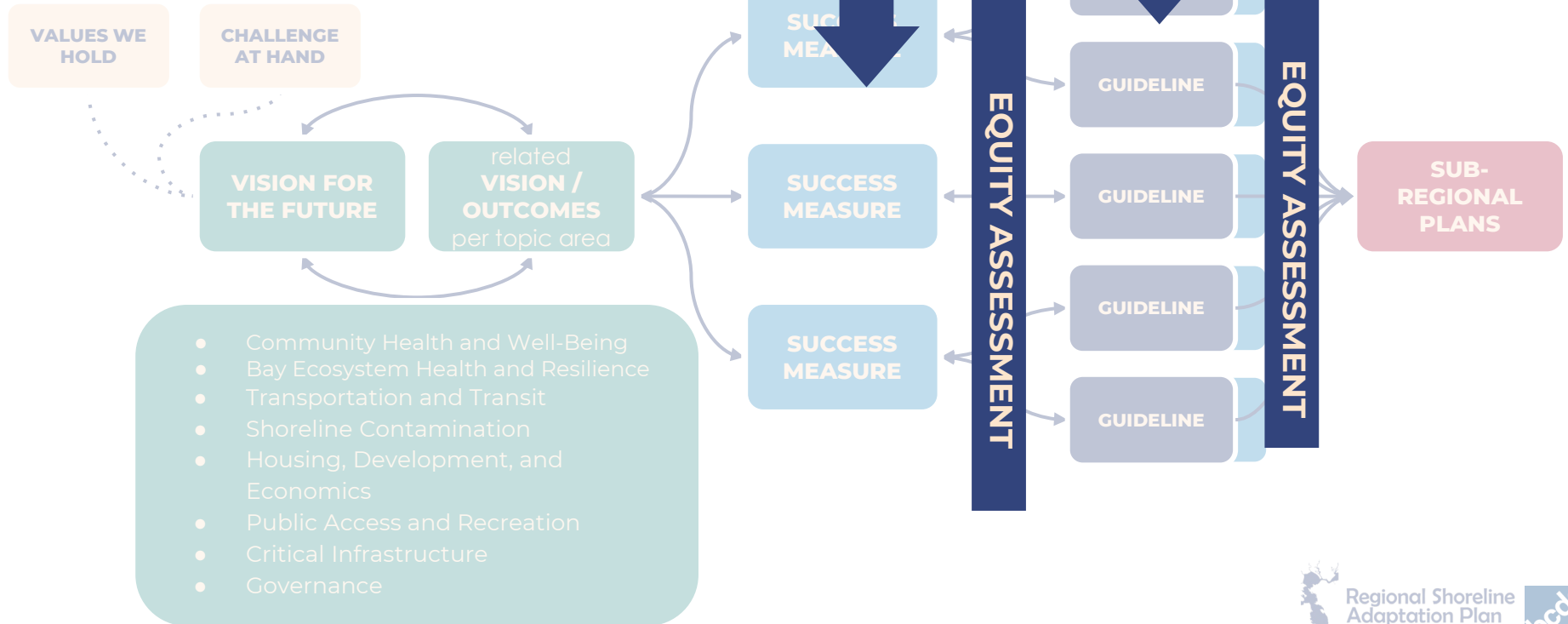


REGIONAL SHORELINE ADAPTATION PLAN (RSAP)
Equity in the Guidelines

RSAP Components



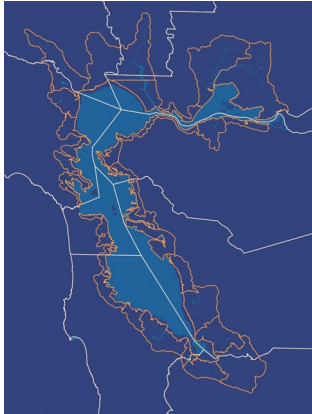
RSAP Components



Q&A for Remaining Time

Mini-Sessions

Please choose your next session!



New to the RSAP?
Learn more

1



Building on
concurrent work

2



SB 272 and what it
means for RSAP?

3



Embedded equity
in this work

4



How data and other
tools can support

5

Additional Slides If Needed

PROJECT TIMELINE

