

An aerial satellite-style image of a coastal region. The left side shows a dark blue ocean with a white silhouette of the state of California. The right side shows a detailed view of a bay and surrounding land, including a city, agricultural fields, and a river system. The text is overlaid on the left side of the image.

Regional Shoreline Adaptation Plan

An implementing project of **BAY ADAPT**

LEARN MORE ABOUT THE RSAP

Public Event #1, October 26th 2023

REGIONAL SHORELINE ADAPTATION PLAN (RSAP)

What is it?



What is the Regional Shoreline Adaptation Plan (RSAP)?

A region-wide plan for the Bay shoreline that guides the creation of coordinated, **locally-planned** sea level rise **adaptation actions** that **work together** to meet **regional goals**.



OCEAN
PROTECTION
COUNCIL



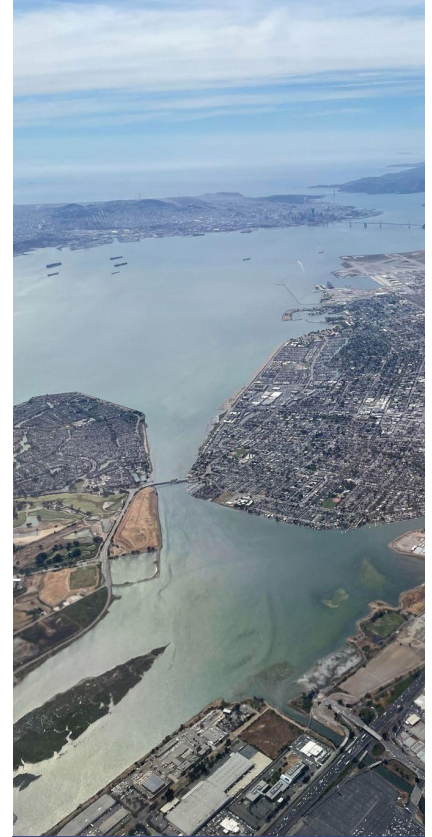
What is the Regional Shoreline Adaptation Plan made up of?



**PART 1:
VISION AND
GUIDELINES**

**PART 2:
LOCAL SUB-
REGIONAL PLANS**

**PART 3: REGIONAL
ADAPTATION
ONLINE MAP**



Aerial view of the Oakland Alameda San Leandro Estuary. Photo by BCDC.

2023

2024

REGIONAL GUIDELINES

SUBREGIONAL SHORELINE PLANS

REGIONAL VISION AND GOALS

DEVELOP GUIDELINES

POLICY AND TECHNICAL ASSISTANCE PROGRAM

GUIDELINES ADOPTION



**PART 1:
VISION AND
GUIDELINES**

**PART 2:
LOCAL SUB-
REGIONAL PLANS**



PART 3: ONLINE MAPPING PLATFORM

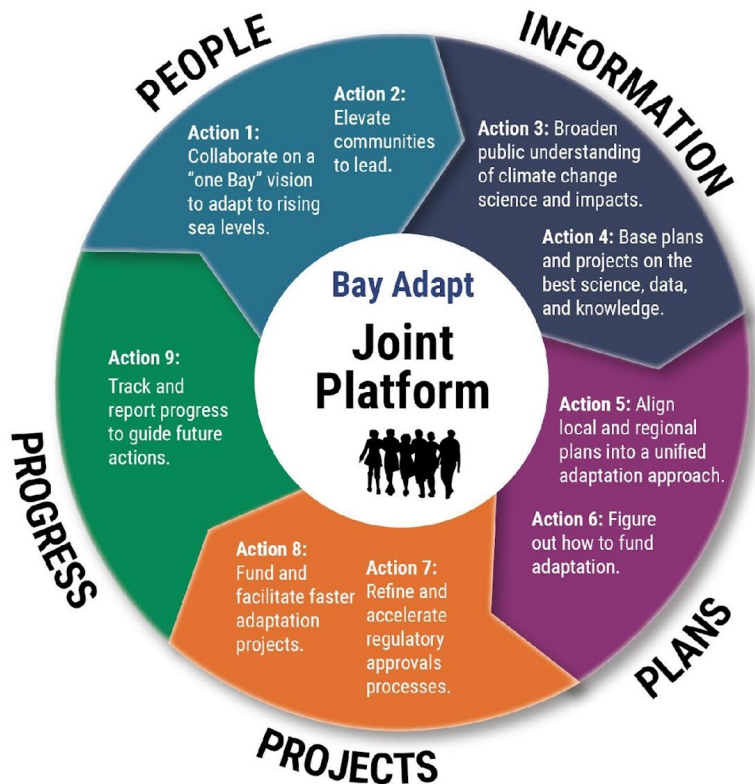


REGIONAL SHORELINE ADAPTATION PLAN

How we got here

BAY ADAPT

REGIONAL STRATEGY FOR A RISING BAY



RSAP is an implementing project of Bay Adapt

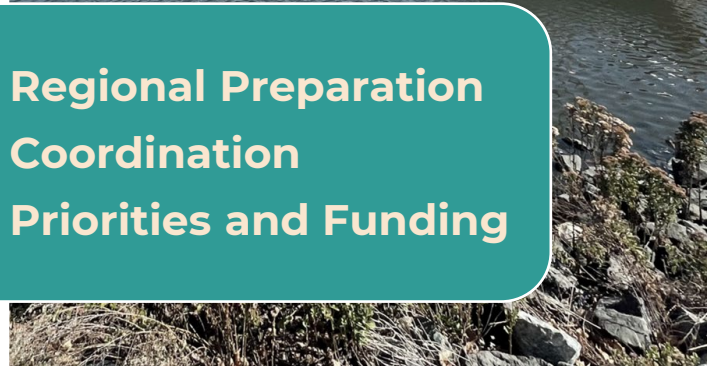
- *Task 1.1:* Create a long-term regional vision rooted in communities, bay habitats, and the economy
- *Task 5.1:* Provide incentives for robust, coordinated local adaptation plans.
- *Task 8.1:* Incentivize projects that meet regional guidelines
- *Task 9.1:* Measure regional progress using metrics and share results.

New legislation to support sea level rise adaptation (SB 272)

- Passed into State law on Oct 7, 2023
- Requires local jurisdictions to develop subregional resiliency plans and for BCDC to develop guidelines for which plans must follow
- Requires BCDC to review - and approve or deny plans - based on consistency with guidelines
- Prioritizes State funding for plan creation and projects in approved plans

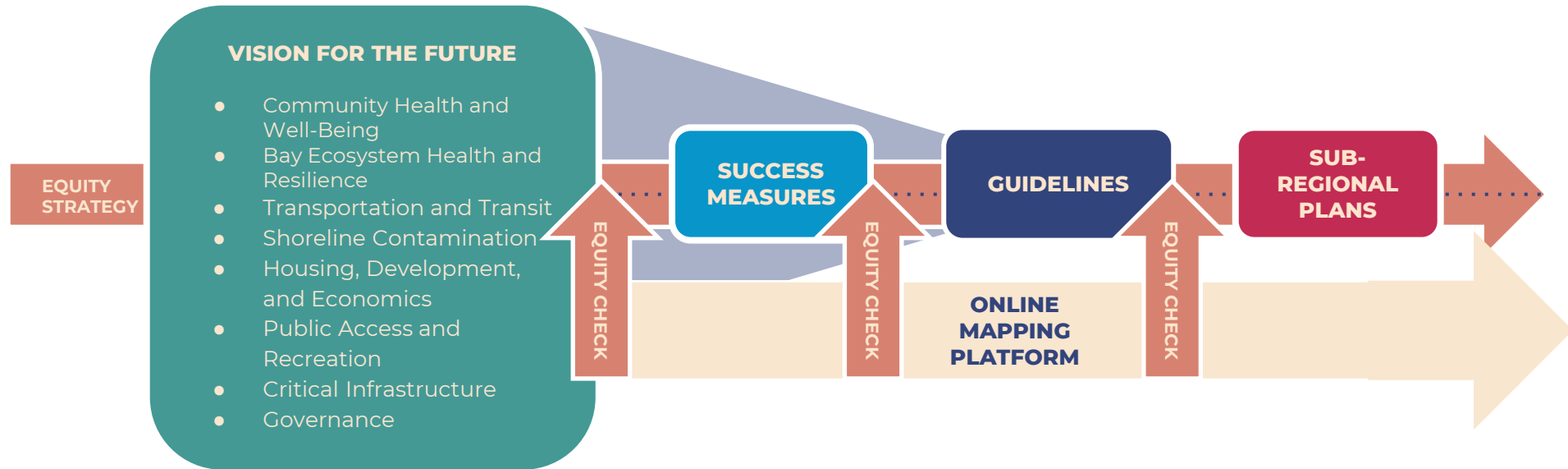


- ✓ **Regional Preparation**
- ✓ **Coordination**
- ✓ **Priorities and Funding**

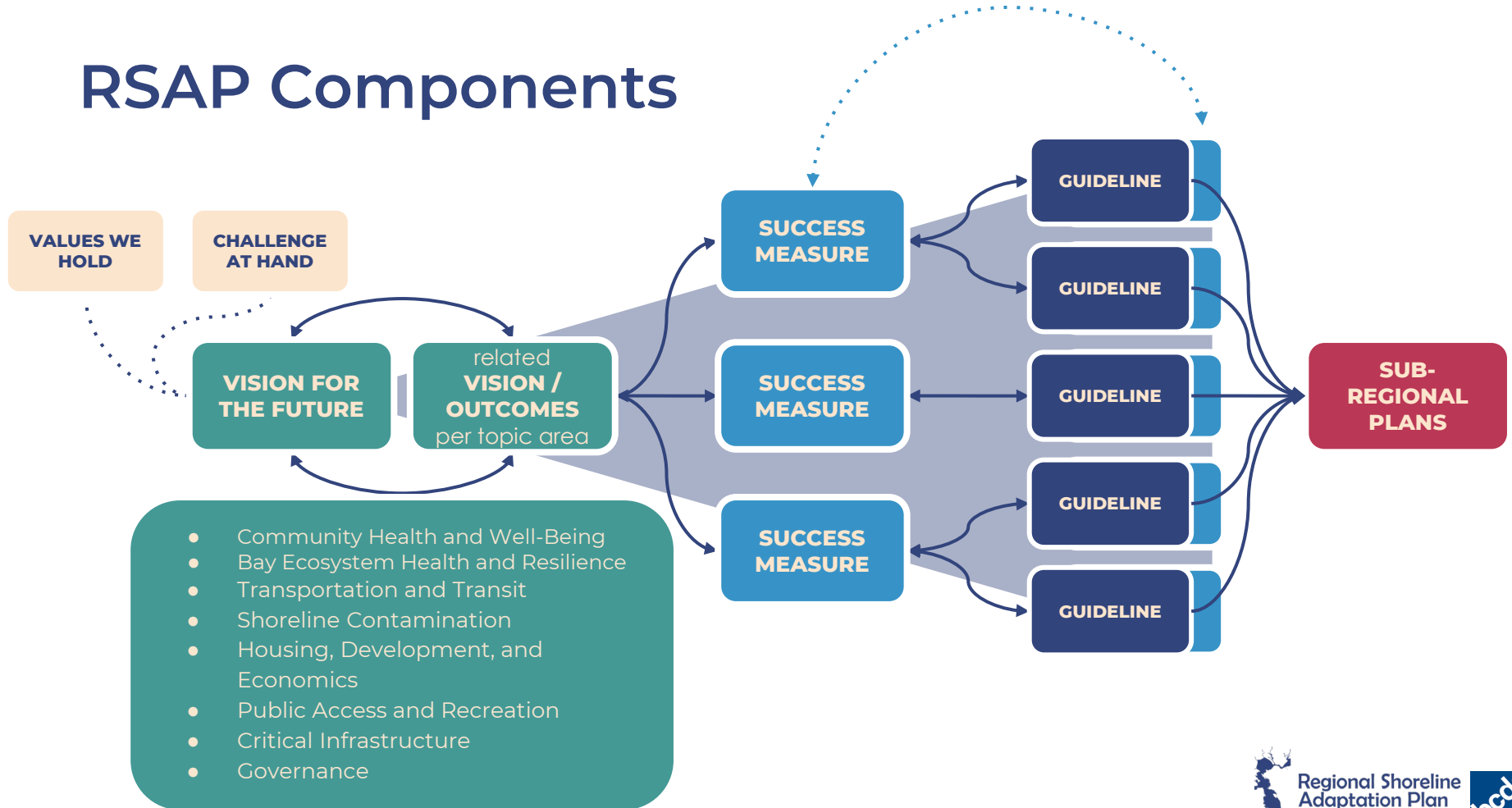


REGIONAL SHORELINE ADAPTATION PLAN
Components and process

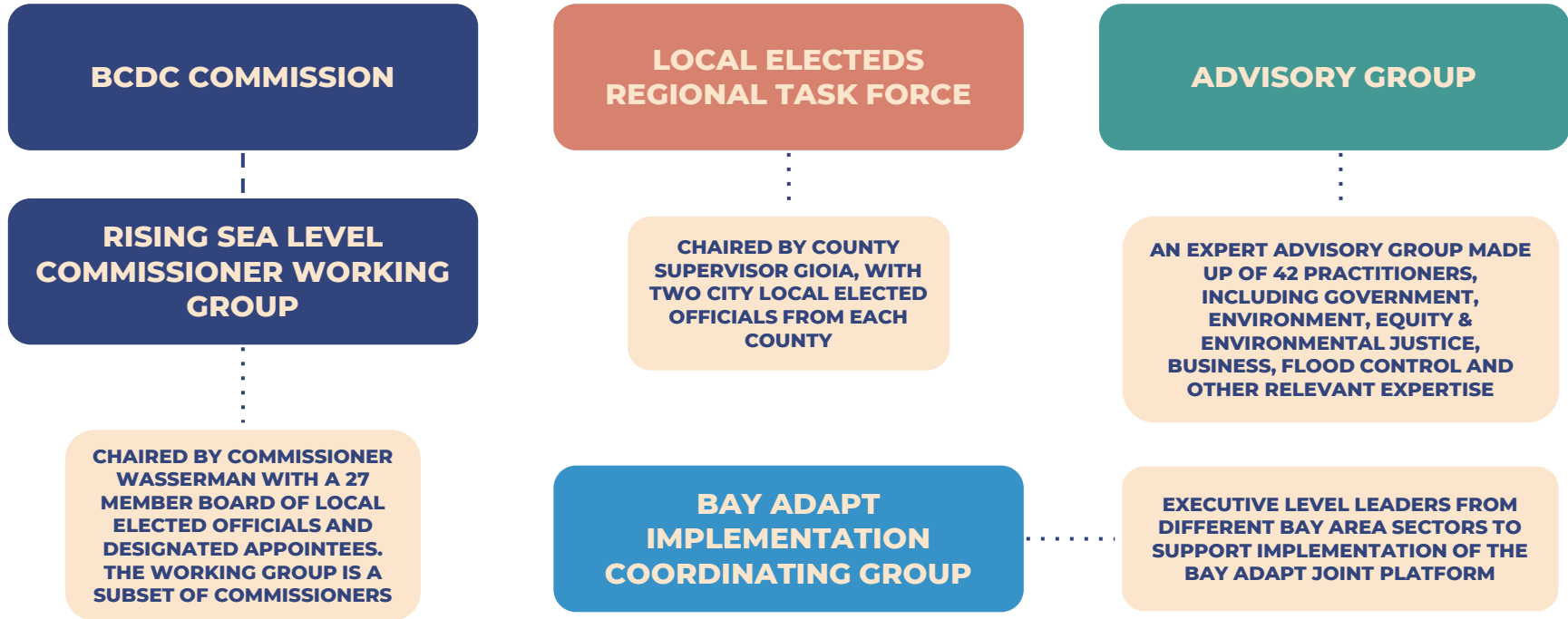
Creating Guidelines for Subregional Resiliency Plans



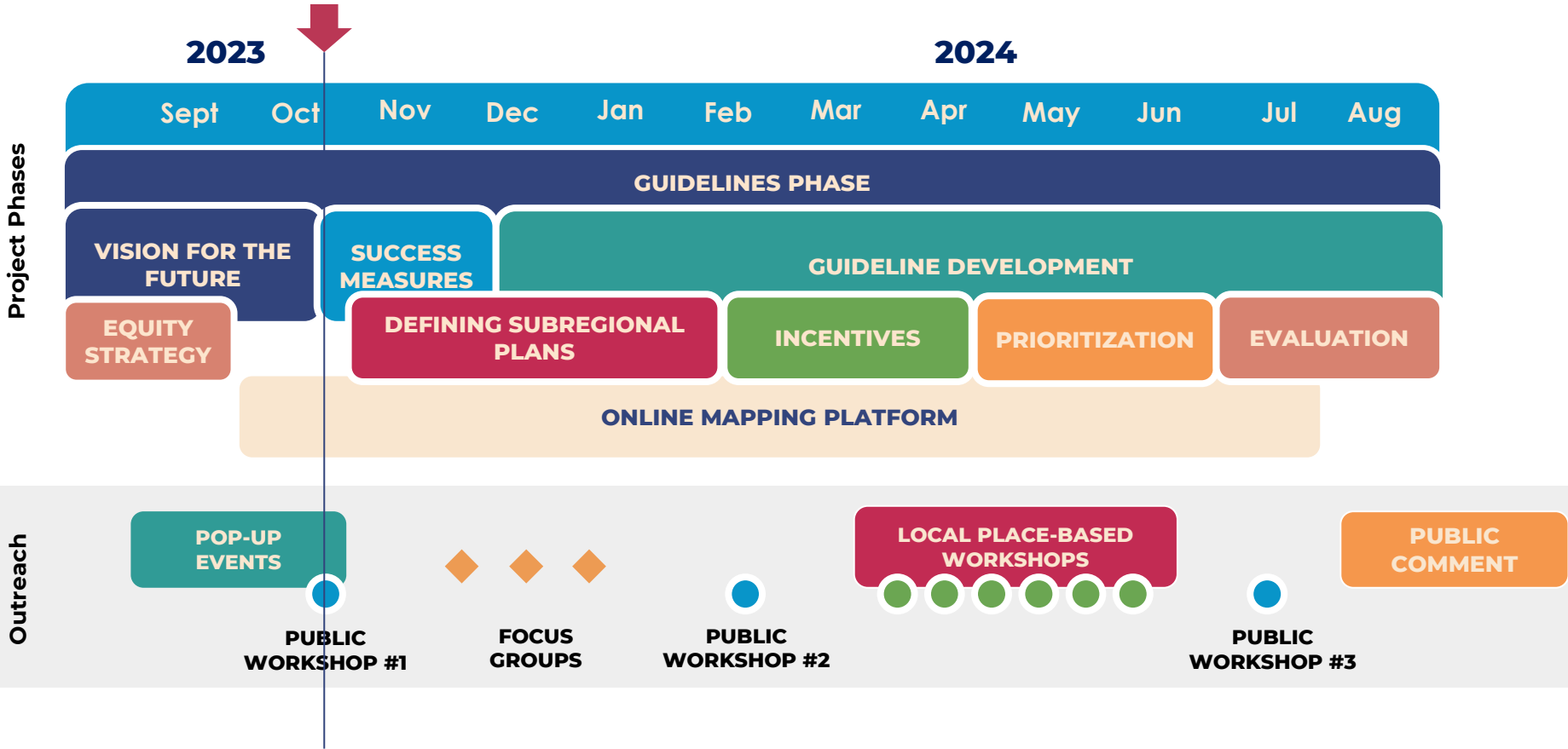
RSAP Components



Leadership Groups



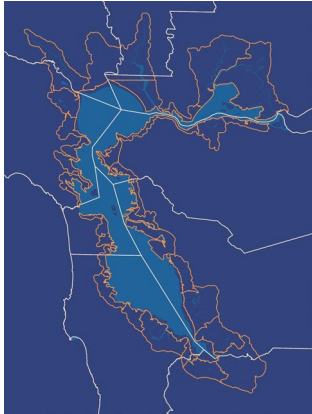
Project Timeline



Q&A for Remaining Time

Mini-Sessions

Please choose your next session!



New to the RSAP?
Learn more

1



Building on
current work

2



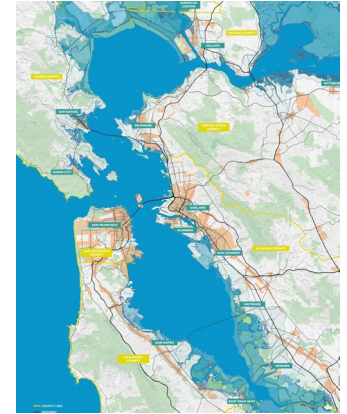
SB 272 and what it
means for RSAP?

3



Embedded equity
in this work

4



How data and other
tools can support

5

Discussion Questions



Discussion Questions

- Is anything unclear to you?
- What aspects of this project are you most excited about?
- Which aspects of this project do you think will be most challenging?
- What else would you like us to know?

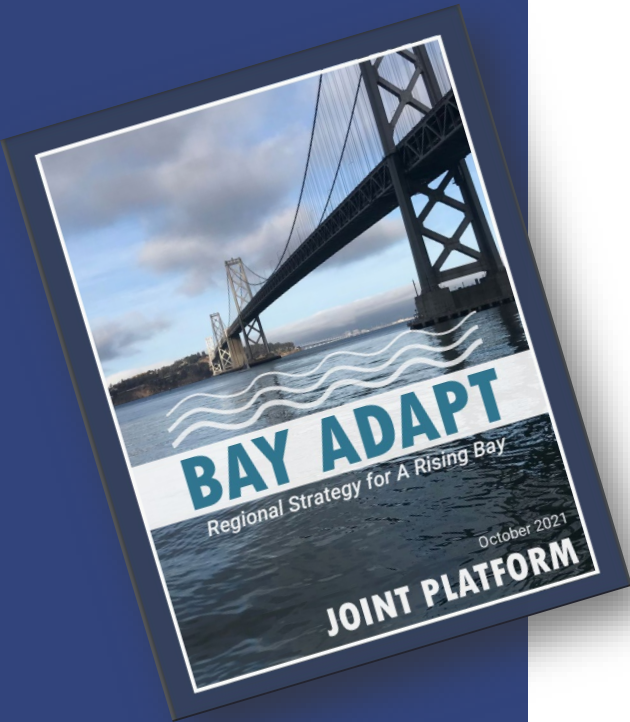
Additional Slides, if Needed

Bay Adapt

Joint Platform

The Joint Platform, and the ideas in it, belong to everyone, and seek to serve everyone, now and into the future.

- **9** actions and **21** tasks
- Engaged over **360+** participants in two public workshops
- **30**-person diverse Leadership Advisory Group
- **81** working group members
- **10** focus group meetings
- Over **50** presentations around the region
- **55** endorsements from cities and counties, state, regional and federal agencies, non-profits, and other public entities



FALL POP-UPS



- 9/7: Richmond - Thrive Thursday
- 9/8: San Rafael - Free Movies in Peacock Park "Vivo"
- 9/17: Newark - Newark Days Community Information Faire
- 9/22: San Rafael - Free Movies in Pickleweed Park
- 9/23 San Francisco – Youth Climate EJ Summit
- 9/30: Oakland - Land is Liberation
- 10/7: American Canyon - Pumpkin Path
- 10/14: Menlo Park – Belle Haven Neighborhood Block Party
- 10/15: Mountain View - 40th anniversary of Shoreline at Mountain View Regional Park
- 10/21: Suisun City – Get the Rush at Rush Ranch

COMMUNITY OUTREACH

9 events | 250+ board interactions

Top "priorities" for Right Now

- **Cost of living** such as food, healthcare, utilities, transportation, etc.
- The **physical health and well-being** of Bay Area residents
- **Housing affordability** and protections for communities to remain intact

Top "priorities" for Future Generations

- Protecting **natural habitats and wildlife**
- Maintaining a **high quality of life** for future generations
- **Cost of living** such as food, healthcare, utilities, transportation, etc.
- The **physical health and well-being** of Bay Area residents



WHAT'S YOUR VISION FOR THE FUTURE OF THE SHORELINE?

170+ responses on survey so far

A comprehensive approach that addresses the problem on all levels. Environmental, climate, economic, biodiversity, quality of life.

-Anonymous

Resilient shorelines that are **multi-beneficial for tidal habitats, flood protection, water quality supply and quality.** No more development along the shorelines and in fact, we should seriously consider appropriate retreat for infrastructure, etc. where feasible.

--Anonymous, San Francisco

Living in harmony with our evolving landscape.

-Jenny, Berkeley

That sea level rise and climate change **offers an opportunity to rethink our current systems** and social structures, reorganizing the world to **foster human relationships to one another and to the natural world.**

-Anonymous, Emeryville

Affordable alternative housing for those affected by SLR, especially the most vulnerable and economically struggling.

- Lynn, Alameda

Government agencies working together to ensure the entire Bay Area is **working to the same set of bold objectives, fair and equitable principles** and **aggressive timeframes** to stay out ahead of this challenge.

-Paul, Alameda

Vulnerable low-income and BIPOC **communities are protected from flooding** and have **access to Bayshore recreation.**

Anonymous, Santa Rosa

We have adapted to rising water and learned to shape our communities **to defend where we can, and welcome the water in, where we can't.**

-Anonymous, Menlo Park