



# Regional Shoreline Adaptation Plan

An implementing project of **BAY ADAPT**

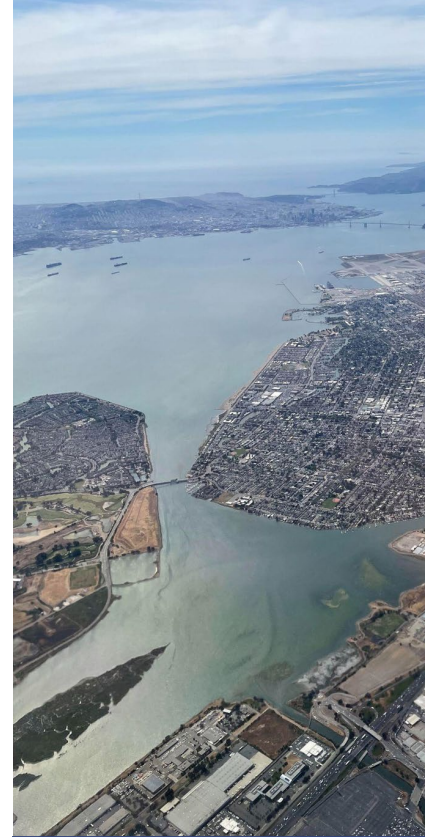
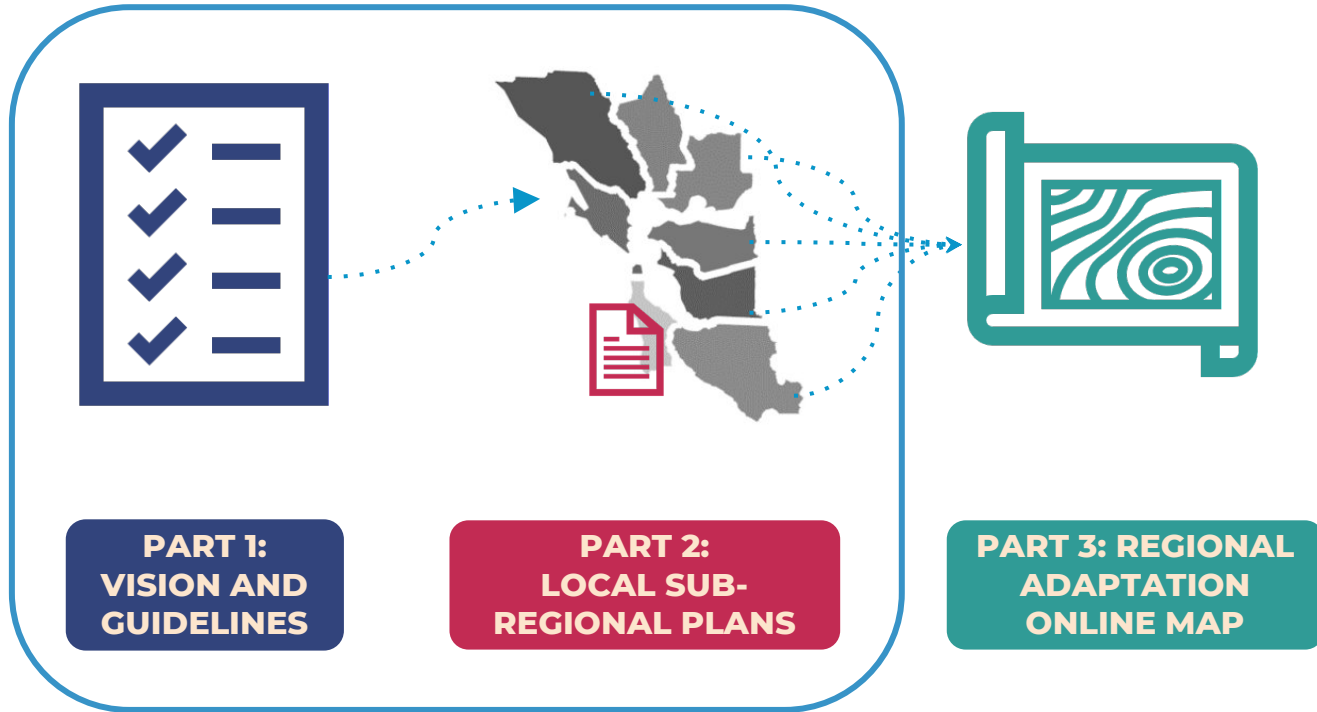
## WHAT IS SB 272?

Public Event #1, October 26th 2023

**REGIONAL SHORELINE ADAPTATION PLAN (RSAP)**

**How does SB 272 affect  
it?**

# What is the Regional Shoreline Adaptation Plan made up of?



Aerial view of the Oakland Alameda San Leandro Estuary. Photo by BCDC.



# SB 272: Sea level rise planning and adaptation (Laird 2023)

## What does SB 272 do?

- Statewide bill
- Within San Francisco Bay, requires local governments to develop “sub-regional shoreline resiliency plans”
- Requires BCDC – in coordination with others -  
- to develop guidelines to be used when creating sub-regional plans, based on Bay Adapt Guiding Principles, by end of 2024
- Requires BCDC to approve plans based on consistency with guidelines
- Sets timeline for plan completion (January 2034)
- Prioritizes State funding towards approved plans for implementation of strategies

[Bill Text - SB-272 Sea level rise: planning and adaptation. \(ca.gov\)](#)



- ✓ **Regional Preparation**
- ✓ **Coordination**
- ✓ **Priorities and Funding**

# SB 272 REQUIREMENTS

## Minimum Requirements for SLR Resiliency Plans:

- Best available science
- Vulnerability assessment, including at-risk communities
- Adaptation strategies and projects
- Planning and implementation leads
- Timeline for updates
- Economic impact analysis for critical infrastructure

**Our work is going above and beyond by creating the guidelines collaboratively and emphasizing equity and nature-based solutions**



# GOOD NEWS! *We've already started*

## Bay Adapt and SB 272 are:

- ✓ Aligned
- ✓ On Track
- ✓ Linked to funding
  - **Planning funding** : \$95 M for local subregional plans and projects (OPC)(coming soon) + other sources
  - **Implementation funding**: State and Federal \$\$



# SB 272: New challenges and opportunities

- Accelerate plan completion before the 2034 deadline. Support local governments in plan funding and creation.
- Define how to submit and approve a "subregional San Francisco Bay Shoreline Resiliency Plan"
- Connect sub-regional plans with BCDC's regulatory program (BCDC's Strategic Plan Goal 2)
- BCDC will address these questions and more through a public, transparent process

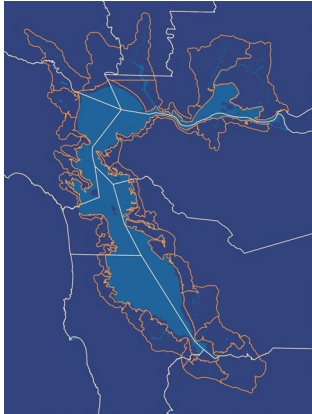


**Q & A**



# Mini-Sessions

Please choose your next session!



New to the RSAP?  
Learn more

1



Building on  
concurrent work

2



SB 272 and what it  
means for RSAP?

3



Embedded equity  
in this work

4



How data and other  
tools can support

5

**Additional Slides If Needed**

2023

2024

**REGIONAL GUIDELINES**

**SUBREGIONAL SHORELINE PLANS**

**REGIONAL VISION AND GOALS**

**DEVELOP GUIDELINES**

**POLICY AND TECHNICAL ASSISTANCE PROGRAM**

**GUIDELINES ADOPTION**



**PART 1:  
VISION AND  
GUIDELINES**

**PART 2:  
LOCAL SUB-  
REGIONAL PLANS**



**PART 3: ONLINE MAPPING PLATFORM**



# PROJECT TIMELINE

